



NORTHERN DESIGN
ARCHITECTURAL PRECAST
& CAST STONE

51 INTERNATIONAL DR.
LOUDON, N.H. 03307
PH: 603-783-8989

IN-HOUSE LIFTING @ 1/4 OR 1/5 POINTS

◊ = FINISHED FACES

↓ = SLOPE DOWN

TYPE:
ARCHITECTURAL PRECAST
CONCRETE FIRE BOWL

ARCHITECT:
NDP DRAFTING DEPT
LOUDON, NH

COLOR: ALT-W BS
MEDIUM EXPOSURE
FINISH: POLISH TOP AND OUTSIDE
LIGHT ETCH INSIDE FACES

REINFORCEMENT TYPE:
EPOXY-COATED MESH

PROJECT:
NORTHERN DESIGN FIRE BOWL

'FB1' SECTION & DETAIL

PROJECT#: 5000 FB

SCALE: AS NOTED

DRAWN BY: BK

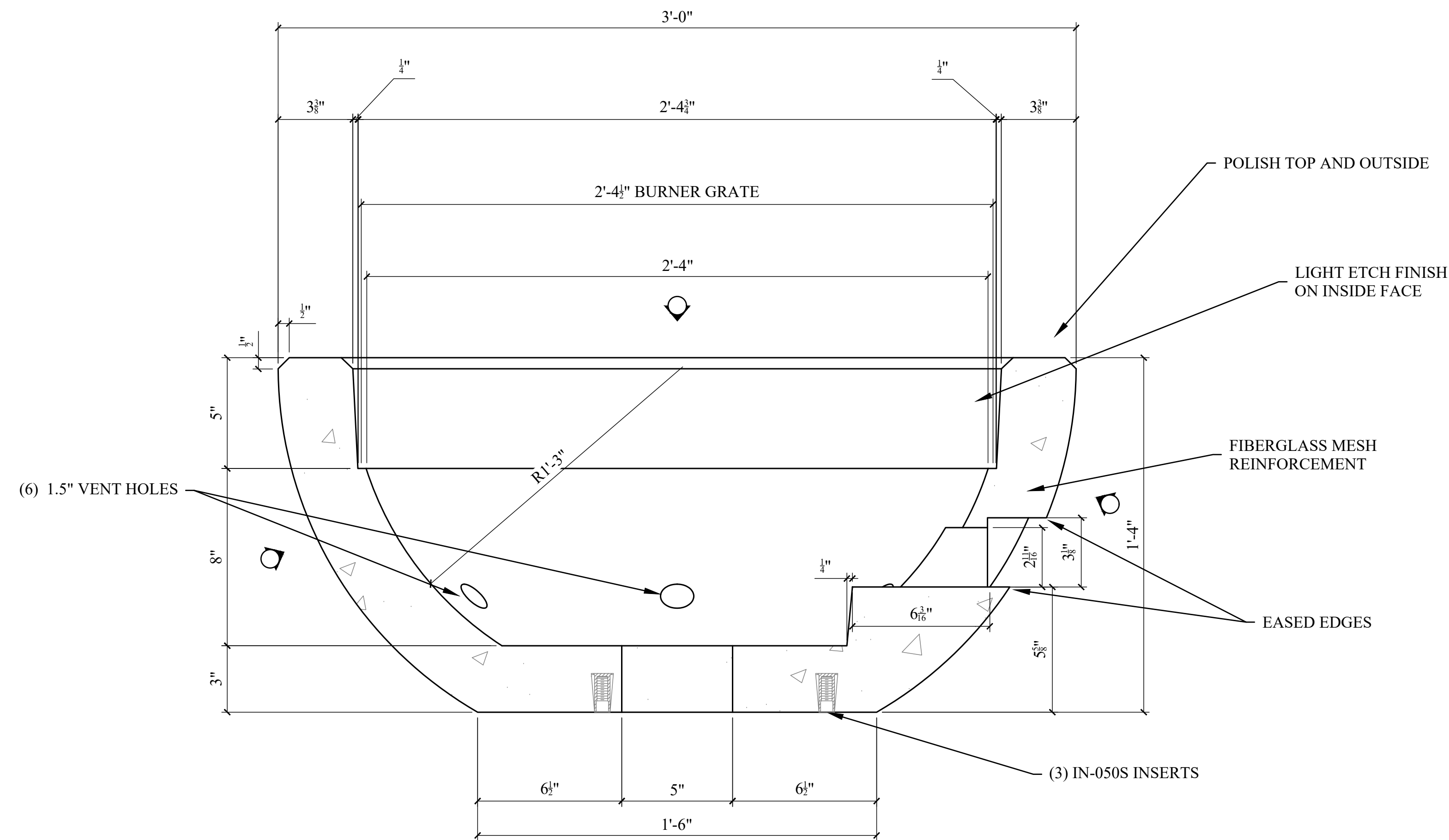
ISSUED/REVISION:

FOR APPROVAL 02/14/23

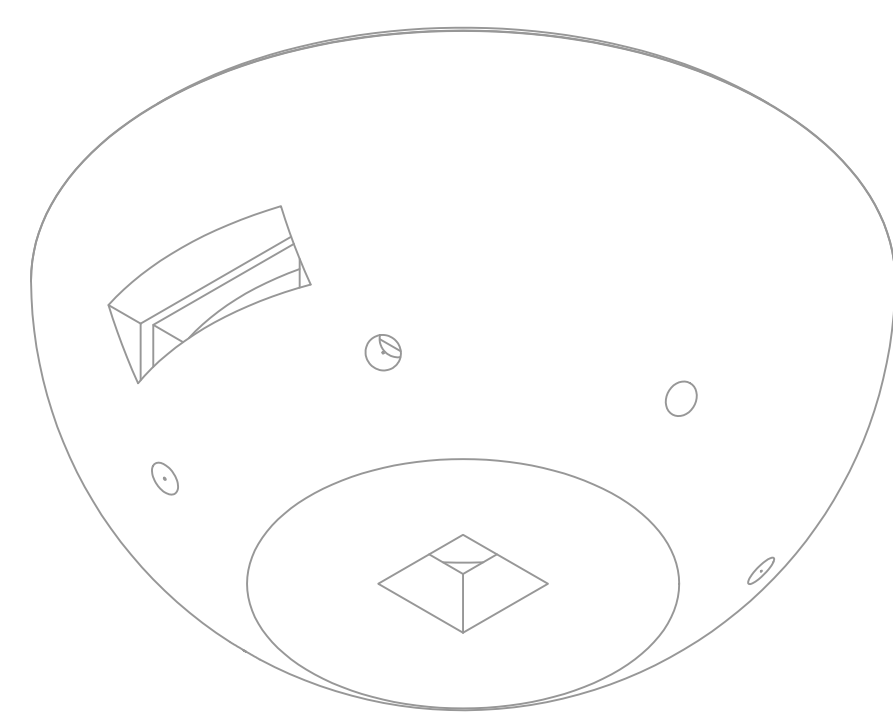
FOR PRODUCTION 02/15/23

P1

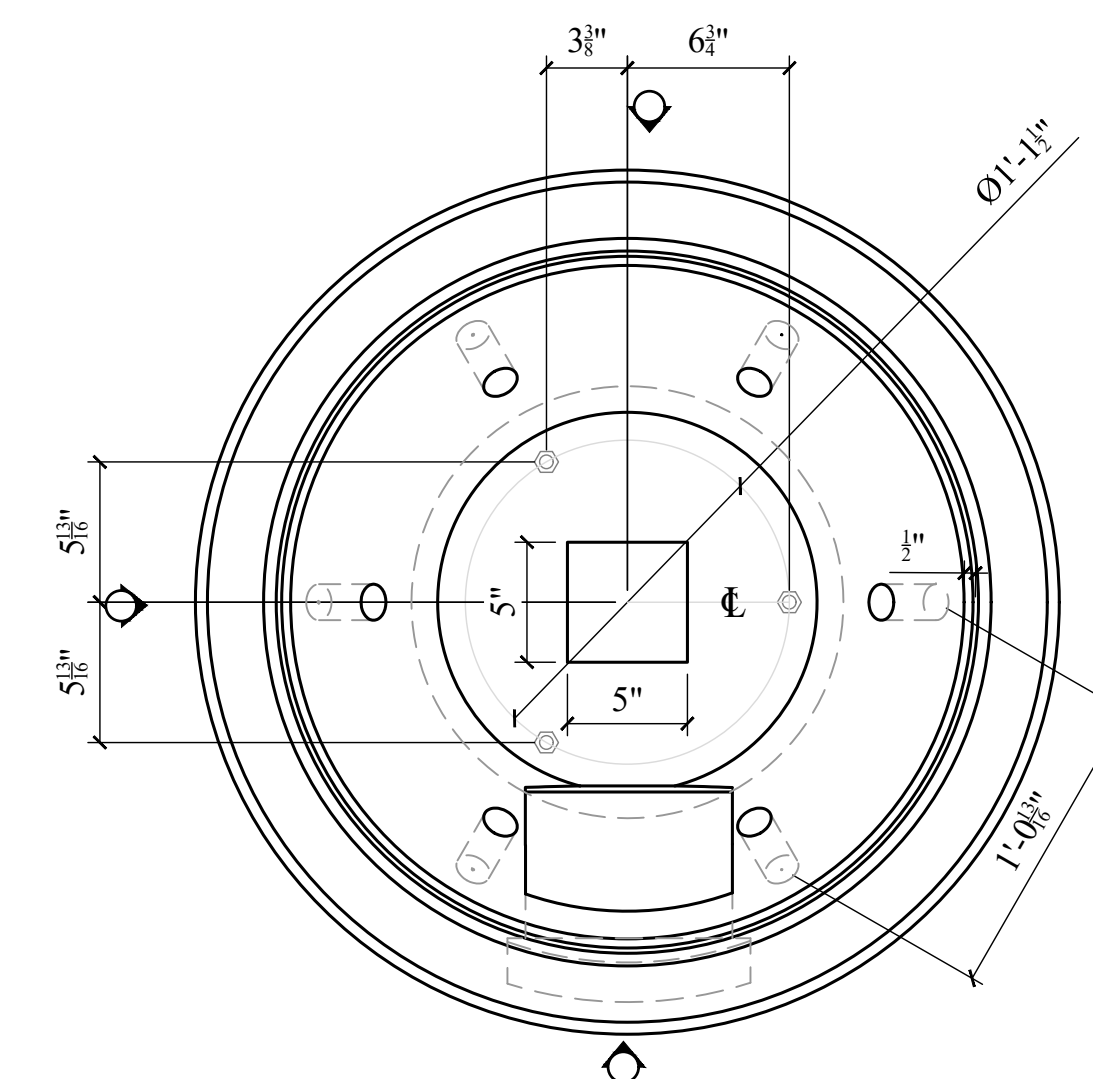
SHEET: 1 OF 1



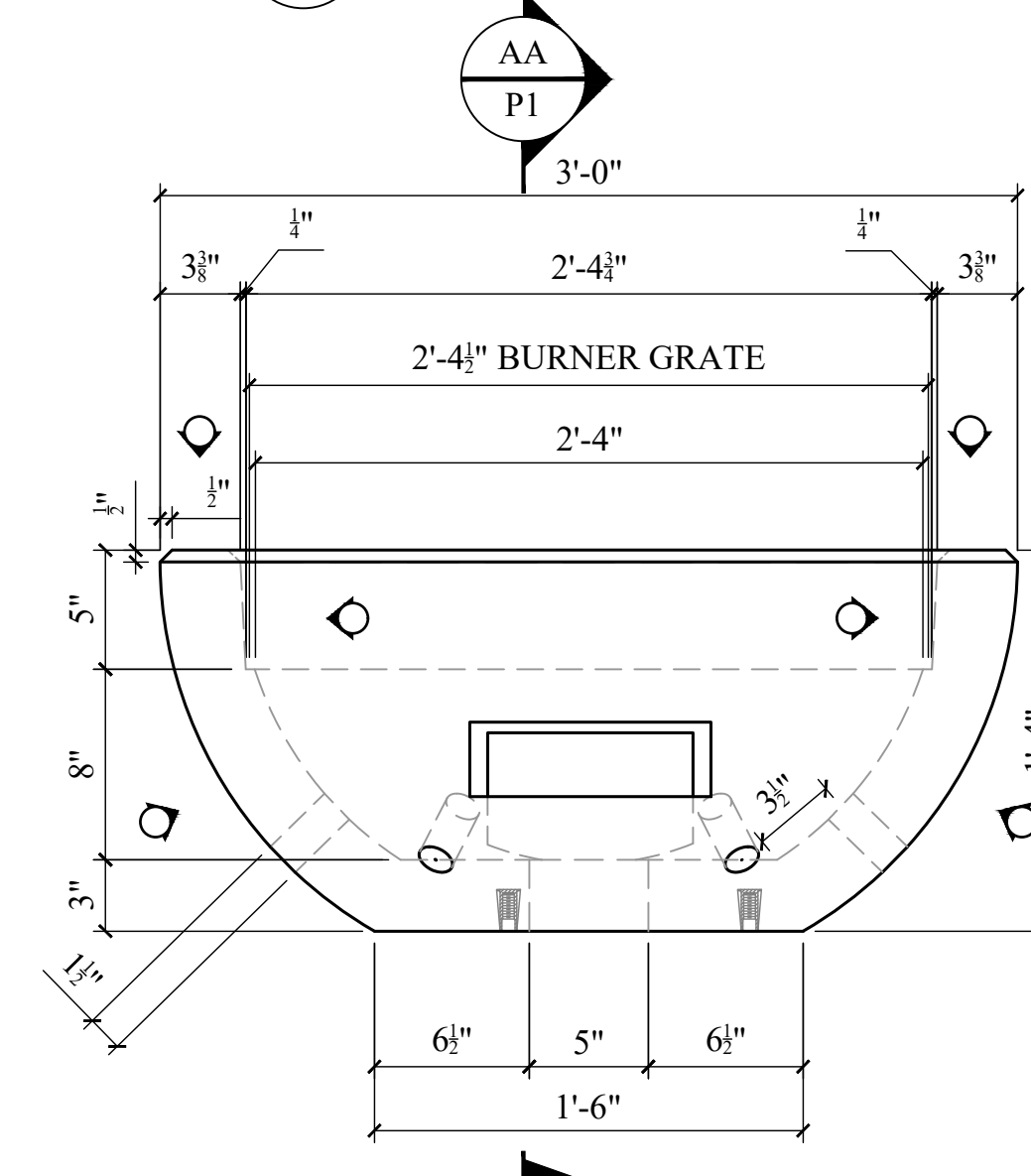
'FB1' SERIES SECTION
SCALE: 1 1/2" = 1'-0"



ISOMETRIC VIEW
SCALE: 1 1/2" = 1'-0"



'FB1' TOP VIEW
SCALE: 1 1/2" = 1'-0"



'FB1' FRONT VIEW
SCALE: 1 1/2" = 1'-0"

TYPE	QTY.	DIAMETER	C.F.	WEIGHT
FB1	X	3'-0"	3.17 C.F.	460

◊ - FINISHED FACES
* - FINISHED ENDS